



# COMPREHENSIVE PLAN AGENDA 2-16-2016

## Executive Steering Committee Meeting

Georgetown-Scott County Planning Commission, 230 East Main Street, Georgetown, KY

### 1. 5:00-5:05 PM WELCOME & INTRODUCTION

---

- Introduce topics for the evening
- Approval of Minutes

### 2. 5:05-5:30 PM RECAP OF KICK-OFF MEETING 01-26-2016

---

- Summary Notes:
  1. Takeaways for each sub-committee
  2. Amended list of topics
- Website Updates

### 3. 5:30-5:45 PM SUB-COMMITTEE SUMMARY

---

- An overview of the sub-committee work plans

### 4. 5:45-6:30 PM DRAFT VISION STATEMENTS & PLAN NAME

---

- Plan name vote/discussion
- Review draft vision statement

### 5. 6:30-6:55 PM MARCH SCENARIO PLANNING MEETING

---

- An overview and discussion of the scenario planning meeting:
  1. Purpose of scenario planning
  2. 3 scenarios for examination
- Scenario Planning Meeting:  
March 21, 2016 from 5-7pm at the Scott County Extension Office

### 6. 6:55-7:00 PM LOGISTICS, DETAILS & DATES

---

- Steering Committee URL: [www.gscplanning.com/CompPlanSteering](http://www.gscplanning.com/CompPlanSteering) & Password: p&zis4me
- Next meeting is either:  
March 15, 2016 from 5-7pm at the Planning Office, or  
April 19, 2016 from 5-7pm at the Planning Office



## **Georgetown-Scott County Planning Commission**

### **Comprehensive Plan Executive Committee Meeting Minutes**

Date: Tuesday, December 15<sup>th</sup>, 2015

In Attendance:	Rob Jones, Chairman	Steve Smith, Vice-Chair
	Joe Kane, Director	Megan Chan
	Bill Burke	Matt Summers
	Rick Hostetler	Kandice Whitehouse
	David Lusby	Polly Singer Eardley
	Claude Christensen	

---

The meeting convened in the Georgetown Fire Station #3 at 5:00 p.m.

#### **Welcome and Introduction**

The Committee approved the minutes from the previous meeting on November 17, 2015. Motion by Polly Singer Eardley, second by Rick Hostetler.

#### **Introductions**

Joe Kane introduced the meeting topics and the report back from six focus group meetings since the last Steering Committee Meeting. There was a lot of good feedback and then he explained that Matt Summers would summarize the feedback and how to use it going forward. Joe then discussed the sub committees and the Vision 2020 plan which was a strategic plan led by the Chamber of Commerce. It looked at subject areas to improve the Georgetown community and the action plans and steps to be taken to incorporate it into our 2016 Comprehensive Plan. Sub Committee Roles: Mike Hockensmith was on the Urban Land Use subcommittee 2006, Claude Christensen was on a few and recorded most meetings so they have good insight about how to go forward.

Joe discussed the main topic for the creating sub committees and the plan going forward with meeting plans and timelines and what the groups would look at.

#### **Focus Group**

Matt Summers discussed the comprehensive list of focus groups and was still working on minutes from those which will be available on the website. Major themes were discussed in chronological order. The first was the Bike Ped and some things discussed there would tie into

the Infrastructure, Health & Human Services, & Community facilities sub committees. Expanding networks to connectivity to make the trails more usable. Another topic was to connect downtown to high school and county parks which is a topic that came up a lot in meetings. Fitness & exercise is a topic about how people can get out and be safe. Community education about bike & ped safety and how to safely cross a street especially at the elementary school. Educating drivers how to interact with bikers. Lastly was safety, and how to make the transportation network safe for anyone who used it. The next group was Human Services; the sub committees which would benefit would be Human Services and the Community Buildings and Facilities. They talked about awareness especially about the homeless population and those with mental health issues in Scott County. There was also discussion with coordinating resources and finding a way to get them to work together so all resources can be maximized. Adequate affordable housing was also big discussion where people want to feel safe where they live. The next group was the neighborhoods group which was different than other groups. This group was given the knowledge about how to hold their own focus groups in their own neighborhoods especially with HOA's. There was a lengthy discussion about the collaboration between all HOA's in the community and the safety between all the subdivisions. Matt discussed the Ag & Environment focus group and different standards for Northern & Southern Scott County to protect the farmland in the southern part of the county. Sadieville held their own meeting about many of the same topics which Joe attended. Joe mentioned that the focus group work will help to decide what each subcommittee will be and what the work program will be and get a better understanding and to gain members.

### Role of the subcommittees

Joe Kane asked that a member of the Steering Committee become a chair for each of the subcommittees and he stated some of the responsibilities for the meetings. Planning staff would take minutes and provide additional research to guide the meetings. Tasks of each subcommittee would be to draft the goals & objectives for the study area, work with staff to write text, and develop the implementation plan. The meetings will be open to the public. Minutes will also be taken at every meeting.

### Proposed Subcommittees

Megan Chan discussed the six proposed sub-committees. Chambers Vision 2020 and past Comp Plans and focus group. The feedback is to be utilized by the six subcommittees. The proposed subcommittees will be the Land Use which will focus more on urban land use. The second is Agriculture & Environment which focuses more on rural land use. The third is Heritage & Urban form which focuses on two subcategories of downtowns and neighborhoods. It focuses on history and understanding the different areas of town. The planning office met with the neighborhoods focus group to see what was going on and seeing what kinds of things the focus group could work on after the comp plan and have some guidance about that. The fourth group

would be growth & economic development. It would work with the overall vision of the plan and how to set policies to get where the community wants to be. The fifth is Infrastructure & Community Facilities. It was merged into one area. These are transportation, utilities, and facilities and anticipate needs and think about connectivity. The last subcommittee is Human Services & Community Building. It falls under mobility, quality of life and human capital. It focuses on what services would be available and let the community know what kinds of things are available to them and how to access them. There was an all-around agreement for the names of each subcommittee.

### Meetings & Timeline

For timeline to get the comp plan adopted in 2016, four major public meetings throughout the year will take place. The first meeting will take place at the extension office to hold the proposed 100+ people that would be in attendance. After the first meeting where the public would sign up for subcommittees. The first three months after that meeting, the subcommittees would meet and do initial research and trying to work on goals & objectives and prepare a draft to bring to the steering committee before the second public meeting in May. After the second meeting, the local legislature would be given an update. The planning office would like to see the whole comp plan adopted and not just the goals & objectives. This update would take part in June. After this the committees would focus more on the implementation of the goals & objectives. Another meeting would happen in August for public input and to show progress on the Comp Plan and the last meeting would take place in October. The plan would be finalized in November and be endorsed by steering committee and planning commission and then brought to the local legislative bodies. Members of the Steering Committee then signed up for one or more of each subcommittee. Kandice Whitehouse was chosen for the chair of Human Services & Community Building. Agriculture & Environment was chosen to be chaired by Claude Christensen. Infrastructure & Facilities will be chaired by Steve Smith. Heritage & Urban Form will be chaired by Polly Singer Eardley. Land Use will be chaired by David Lusby. Growth & Economic Development will be chaired by Rob Jones. There was a little more discussion about the depth of each subcommittee and certain ordinances that will be a result from each.

### Logistics, Details, & Dates

It was confirmed the next meeting will be held on January 19<sup>th</sup> at Fire Station #3.

There was no further business, the meeting adjourned.

## **Georgetown-Scott County Planning Commission**

### **Comprehensive Plan Executive Committee Meeting Minutes**

Date: Tuesday, January 19<sup>th</sup>, 2016

In Attendance:	Rob Jones, Chairman	Joe Kane, Director
	Megan Chan, staff	Matt Summers, staff
	Bill Burke	Christie Robinson
	Rick Hostetler	Polly Singer Eardley
	Kandice Whitehouse	Claude Christensen

---

The meeting convened in the Planning Office at 5:00 p.m.

#### **Introductions and Public Meeting**

Joe Kane introduced the meeting topics, and asked Megan Chan to speak regarding the Comprehensive Plan Sub-Committees. Megan announced the monthly meeting date schedule and the conflicts that any of the committee members might have with any of the meetings. The public meeting will be divided into three sections. The first will be a presentation from Joe. The second and third will be conducting an overall visioning and brainstorming session. The goal is to create a list of things to be put in the overall statement. After that everyone is given the ability to sign up for any sub-committees they like. For example, there will be a slide in the presentation about the Land Use Sub-Committee. It will state the general topics and the dates for the meetings. It will hopefully explain slightly what the group will be talking about and will be issued for each sub-committee. One of the activities will be to start with a blank slate and ask the attendees what's important to them in the community and align it with past comp plan. It was also asked if facilitators would come into the meetings and provide guidance and if they would be part of the committee or be paid for the meeting. Someone also asked if there was a way to be able to keep the meetings on schedule in case things started getting out of hand. The GSCPC office is working on getting an intern to help with keeping track of minutes, and meeting schedules.

#### **Logistics, Details, Dates**

It was confirmed that everyone would meet on January 26<sup>th</sup> at the Comp Plan Kick-off meeting at the Scott County Extension Office.

There was no further business, the meeting adjourned.

**Comp Plan Kick-Off Meeting  
Tuesday, January 26, 2016  
6:00-8:00pm  
Scott County Extension Office**

Meeting Overview

The first public meeting was held on Tuesday, January 26<sup>th</sup>, 2016 from 6:00-8:00PM at the Scott County Extension Office, 1130 Cincinnati Road. Approximately 110 members of the public attended the meeting. As attendees entered the meeting facility they were asked to sign-in and write on an index card about how they would describe Georgetown and Scott County. The activity was conducted to get a sense about how the public sees the community they live in.

The meeting consisted of two parts; first, a presentation from Director Joe Kane regarding the purpose of the Comprehensive Plan, the planning process, the regular 5 year updates, and how the plan would change from the last major update in 1991 to the new update in 2016 and how we want Scott County to look by 2040. Second, the meeting offered attendees several break-out activities focused on three key themes: 1) the present, 2) the future, and 3) how to get involved. Four break-out activities for discussion and input regarding the present and the future of Scott County and another section of the room was devoted to tables for each of the six sub-committees for sign-up and more information about how each one contributes to the Comp Plan.

Break-Out Group Notes

**Word Cloud Activity (Present):**

Meeting attendees were asked the question, "If you could describe Scott County in one word, what would it be?" (Or Georgetown, Stamping Ground, or Sadieville) The results were tallied and associated words combined to produce the following word cloud. The size of the words reflects the numbers of times each word was submitted. (See attached)

**Important Places Mapping Activity (Present):**

Participants were asked to place pre-numbered dots on a map that coincides with an important place in the community and write down the reason why it is important to them. There were 125 dots placed on the map. The majority of the dots were placed around:

- Schools
- Downtown Georgetown
- Parks
- Georgetown Library
- Heritage sites
- Farms
- Major transportation corridors
- Waterways

(See attached summary)

### **Long-Term Vision Activity (Future):**

"Imagine Scott County in 2040. What does it look like?" Attendees were asked to create a vision of what the future will hold and place them on the walls for everyone to see. These were categorized as physical/environmental, social, and economic. Participants were asked to include ideas for the future, their wants, and needs, etc. They were also asked to consider what is missing in the community that they would like to have. After the meeting, each idea was then placed with a respective sub-committee. (See attached word document)

### **Growth Management Activity (Future):**

"We've had a rapid annual growth rate and are expected to reach a county-wide population of 100,000 people by 2040 (twice our current pop). What do we need to be doing to prepare for that kind of growth?" Each participant was asked to put ideas on post-it notes and place them on the wall for others to see. (See word document) There were two or more concerns about the following:

- Public transportation (for non-driving or handicap)
- More connectivity between downtown areas and parks to residential subdivisions
- Sidewalks throughout the community

### **Get Involved**

The purpose of this station was to begin discussions with the sub-committees, gather ideas for what the committees can further review, and develop interest in serving on the sub-committees for future meetings. The chairs of each committee were asked to meet with individuals interested in their respective sub-committee. Planning Commission staff were on hand to help direct individuals to the groups they may be most interested in joining.

### **Land Use**

The chair is Davis Lusby and the staff lead is Joe Kane. Other additional staff are Megan Chan and Matt Summers. The committee meets the third Monday of each month from 5-7PM in the Planning Commission office at 230 E Main Street. The general topics are as follows:

- Summary existing/history of land use within Georgetown and Scott County
  - Urban Land Use - do we have appropriate levels of the following land uses?
  - Commercial / "Employment Districts"
  - Industrial
  - Residential / Housing
- (The focus is more on land use here, additional info covered in human services section.)
- Green / Open Space / Parks
  - Incentives for low impact design/density/affordable housing
  - Regional role and collaboration



- Countywide Future Land Use Map
- What is the format for how we review specific parcel zone change requests? (Not yet determined – in the past, they provided an application process for review and consideration before the Planning Commission)
- Review of the Urban Service Boundary (USB) and new requests for expansion
- Greenbelt location, width, and/or expansion
- Small area plans or emphasis surrounding new transportation corridors

### **Agriculture & Environment**

The chair is Claude Christensen. Staff Lead is Matt Summers and the additional staff is Joe Kane. The committee meets on the third Wednesday of each month from 5-7PM at the Planning Commission Office at 230 East Main Street. The general topics are as follows:

- Agriculture
- Conservation/Preservation
- Purchase of Development Rights (PDR) program
- Rural residential (potentially smaller/larger lots)
- Agri-business opportunities
- Rural Land Use (to be included in the Land Use chapter or element)
- Agriculture
- Farmland preservation
- Rural Residential (A-5 versus the A-1 zone district)
  - Clusters or rural subdivisions
  - Transect, ring or strategic location for A-5 zone on Future Land Use (FLU) Map
- Commercial or Industrial outside the Urban Service Boundary (USB)
- Wireless Communication Facilities
- Environmental Impacts of Development
- Environmental Quality, see Vision 2020 Infrastructure/Environmental Quality
- Environmental sustainability
- Recycling
- Litter
- Review of the 1991 Comp Plan elements
- Environmentally sensitive land uses (sinkholes, creeks, steep slopes, natural water features, etc.)

### **Heritage & Urban Form**

The chair is Polly Singer Eardley. The staff lead is Megan Chan and the additional staff is Joe Kane. The committee meets on the third Thursday of each month from 5-7PM at the Planning Commission Office at 230 East Main Street. The general topics are as follows:

- Urban/Ag divide – Review histories and purposes, regulations to support continued success of each.
- Form Based Codes or Overlays? (Mixed Use Districts, etc.)

- Community Appearance & Design
- Transitions between districts
- Traffic Calming
- Enforcement
- Infill
- Incentives for low impact design/density/affordable housing
- Density bonuses/lot sizes
- Street sections
- Downtowns
- Georgetown/Stamping Ground/Sadieville Downtown
- Downtown Master Plan (do we want for Georgetown or all three cities?)
- H-1 district and Architectural Review Board (ARB)
- Neighborhoods
- Neighborhood planning elements, how-to's & priorities
- Wellness program
- Partnerships
- Funding programs
- Usable park space, land dedication with major subdivisions
- Access to parks and other facilities
- Homeowners Associations (Don't want to compete with city efforts)

### **Growth & Economic Development**

The chair is Rob Jones. The Staff lead is Matt Summers and the additional staff is Megan Chan. It meets on the fourth Monday of each month from 5-7PM at the Planning Commission office at 230 East Main Street. The general topics are as follows:

- Overall county-wide vision/identity
- Controlled growth, planned vision
- Sustainability Development
- Financial Impact and Analysis of new development:
- Impact fees
- Requiring developers to show life-cycle costs, etc.
- Discuss setting rate for costs of providing urban services in different location (incentive for development)
- Any other financial incentives
- Stable and diversified economy
- Employment opportunities
- Workforce training
- Business incubators
- Regional business market
- Include ag jobs
- Regional branding, tourism and recreation
- Agri-business opportunities

## **Infrastructure & Community Facilities**

The chair is Steve Smith. The Staff lead is Joe Kane and the additional staff is Matt Summers. It meets on the fourth Tuesday of each month from 5-7PM at the Planning Commission office at 230 East Main Street. The general topics are as follows:

- Transportation
- Community Appearance & Design
- Street sections
- Auto, Bike, Ped, Air, Rail
  - Countywide road improvement plan
  - Urban versus rural needs and maintenance, character
  - Bicycle and pedestrian plan
  - Regional planning
- Connectivity between land uses/districts/for pedestrians across arterials
- Systems thinking versus isolated user-type
- Street furniture
- Utilities
- Electric, gas, water, sewer, internet, cellular
- Physical Facilities & Services - What are our anticipated growth needs? What should be consider changing in the future?
- Public services: police, fire, gov't, etc.
- Landfill
- Recycling
- Cardome, Ward Hall, Reservoir
- Hospital & health services
- Parks and recreation (neighborhood level parks, especially)
- Mapping of infrastructure in GIS
- Capital improvements plan
- Measuring Level of Service (LOS)
- Measuring costs for short- and long-term provision of public services for new development
- Wireless Communication Facilities

## **Human Services & Community Building**

The chair is Kandice Whitehouse. The Staff lead is Megan Chan and the additional staff is Matt Summers. It meets on the fourth Thursday of each month from 5-7PM at the Planning Commission office at 230 East Main Street. The general topics are as follows:

- Livability/Quality of Life issues
- Access to services
- Education/Awareness initiatives & programming
- Education about homelessness and low-income individual/family concerns
- Local official and public knowledge of the existing problem

- Awareness of existing/available services
- Reinvigorate Community Connection and/or similar pairings that promote available resources
- Eliminate sub-standard housing
- Regular inspection of rental housing
- Incentives for affordable housing
- Help Center for migrant workers or low-income individuals
- Workforce training
- Developing and fostering partnerships
- Education
- School, homes, libraries
- Partnerships with businesses
- Tech and global perspectives
- Community gathering places
- Regional tourism and recreation, as related to impact on local brand/vision/quality of life



## Important Places Mapping Activity

1-26-2016

"What is an important place in our community? Why is it important?"

Summary/Themes: Community facilities and historic assets strongly influence our sense of place. Our rural landscapes & natural environment are also a big factor in the way we view our community. The following were the most frequently identified places of importance: schools, downtown, parks, library, heritage sites, farms, major transportation corridors, waterways.

See map for more details

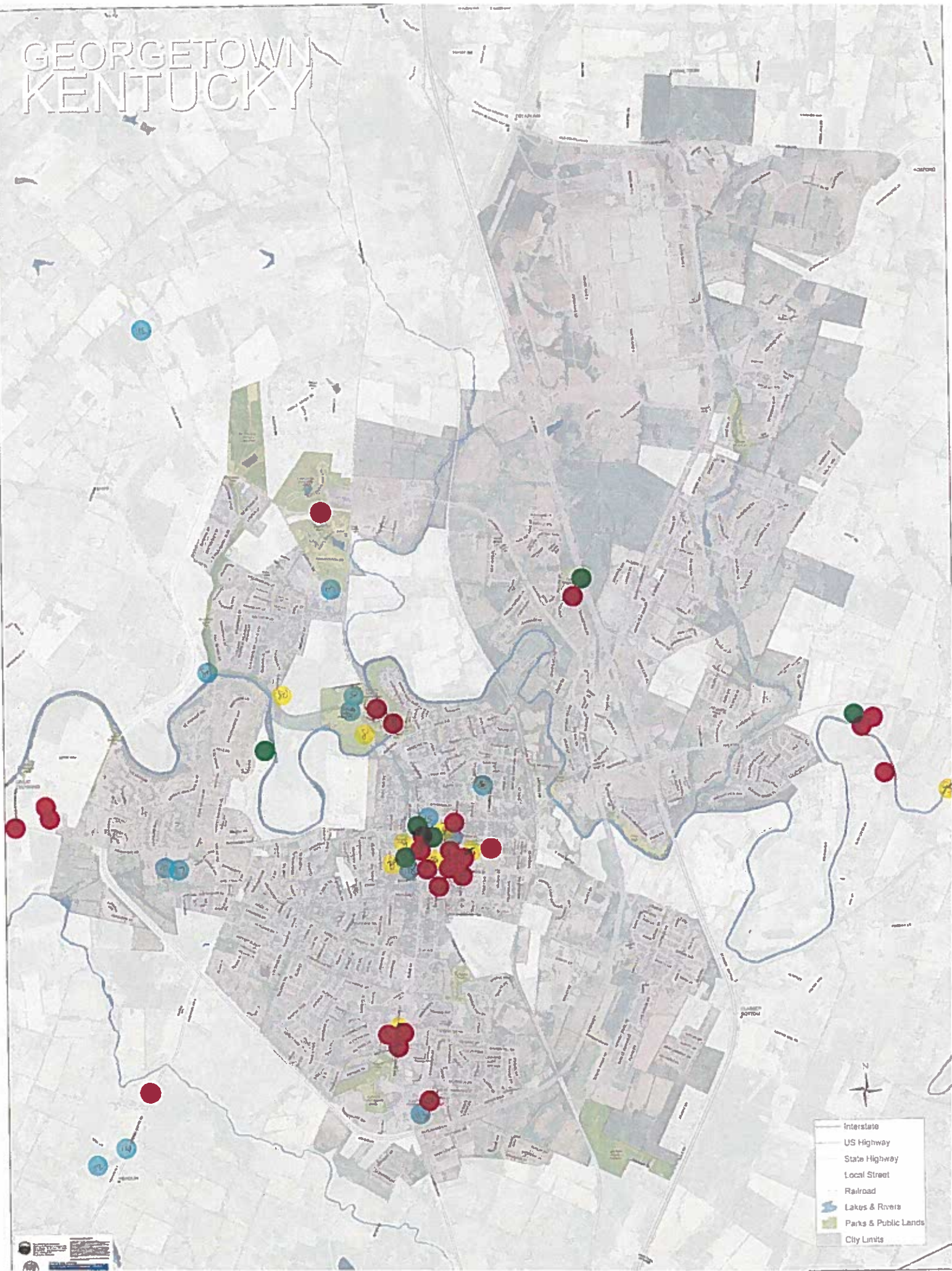
Dot #	Location	Importance
1	Veterans Wma	Hunting & fishing resource
2	Netwon Pike	Transportation
3	Schools	Education-"key to life"
4	Royal Spring Park	History & Tourism, Public green space
4	Downtown/Main street	Center of community
5	Georgetown College	Education, Employment, and community engagement
6	Downtown/Main street	Lively, lighting, small business, concerts, economic engine, no empty store fronts
7	New High School	
8	Cardome/ Yuko En	Gardening/nature
9	Cardome/ Yuko En	Gardening/nature
10	Ward Hall	
11	Georgetown College	
11	Arts & Cultural Center	Heritage, tourism
12	Wedco Health Department	Health Education & Services
13	Cardome	Heritage, family history
15	Downtown/Main street	Center of community
16	Pavilion	
17	Pavilion	
18	Downtown/Main street	Lively, lighting, small business, concerts, economic engine, no empty store fronts
19	Yuko-en Ky Japan Friendship Garden	The official State KY/Japan friendship Garden-tourism
24	Georgetown College	
25	Water System	Treat limestone in H2O
26	Rucker, Royal Spring Avenues	Prime cropland
27	Gas Station 460	Need more commercial zoning/development in county
28	Reservoir	Recreational opp. Need management plan
29	Library	Promotes literacy & learning, education history, community gathering
31	Downtown	Handsome old public buildings
32	Triple-J Farm	Community-Support Agriculture
33	Horse Park	Statewide resource shared with Fayette County
34	Legacy Trail	Need connection to Fayette with safe walking and running trail
35	I-75	Great Access
37	Elkhorn Creek/Farming community	Ag, wildlife scenic
38	North Georgetown	Outdoor/indoor recreational areas needed
39	Rucker, Royal Spring Avenues	S. Price's Prime Cropland
40	City of Stamping Ground	small community atmosphere with easy access to large city amenities
41	Elkhorn Creek/Farming community	Ag, wildlife scenic
42	Elkhorn Creek/Farming community	Ag, wildlife scenic
43	Stamping Ground	Ripe for residential development
44	Cit of Stamping Ground	Expand city limit for residential and recreational
45	Abandoned Rail Road	Build rail to trail, connect to legacy trail

Dot #	Location	Importance
46	Bypass	Best opportunity for multi-use trail road that connects neighborhoods and destinations
49	Elkhorn Creek	Largest water body
50	Sonetown Road, Stamping Ground	African american historic place
51	Watkinsville	African american historic place
52	Stamping Ground	History of Scott Co.
53	I-75 Porter	Economic growth
54	Sadieville	Community Survival
55	N. Broad/525	Sidewalk/ Ped Connection from H.S. to downtown to park
56	Skullbuster	Mountain biking, tourism dollars,
57	I-75 exits	Railhead heritage, re-establish
58	Prime Farmland	Impact fee or fee on development that funds PDR
59	Reservoir	Tourism/economic engine
60	Downtown/Main street	Center of community
61	Commercial Area Connector	Need park for residential subdivisions- connect to subdivisions
66	Farm in green belt	Important to maintain property rights of farm owners
68	Stamping Ground	expand utilize for Industrial
69	Stamping Ground	Annex out to provide cable/trash
70	Stamping Ground	Incentive to fill existing subdivisions
71	Recreation on Elkhorn Creek	
72	Sadieville Interchange Expansion	
73	460 Paris Road	Value historic agricultural property-community supported agriculture and organic farming
74	460-East	Maintain Elkhorn Ag water supply
76	Elkhorn Creek	Protect waterway-scenic recreation, irrigation
77	Elmwood Stock Farm	Historical Farm, USDA certified organic farm, National register of historic places
80	Geo./SC Trails System	Need to make connections to existing trails
81	Geo./SC Trails System	Need to make connections to existing trails
82	Paris Pike	Important road
84	460 & Elkhorn Corridor	Valuable economic and natural resources as farmland-slow loss of this with larger minimum lot size 10-15 acres
85	460 East	Lanes run and millers run historic district
86	461 East	Lanes run and millers run historic district
92	Crumbaugh	Valuable farm and historical and beautiful service land
94	Downtown/Main street	Center of community
95	Evans Orchard	Kid oriented, small business
99	Sadieville	Historic site potential park area
100	Reservoir	Trails, horseback riding, hiking, biking
101	Great Crossing park	Relaxation, hiking, fishing, protect & clean up water
102	S. Urban Service Boundary	Maintain urban divide with Lexington
104	Schools	Education-"key to life"
105	Stone Fences	Scenic, Historic Preservation
106	Stone Fences	Scenic, Historic Preservation
107	Library	Promotes literacy & learning, education history, community gathering
108	Downtown/Main street	Lively, lighting, small business, concerts, economic engine, no empty store fronts
109	Elkhorn Creek/Farming community	Ag, wildlife scenic
110	Georgetown College	Education, Employment, and community engagement
111	Royal Spring Park	
112	Old Friends	Tourism, Public services, Humane services

<b>Dot #</b>	<b>Location</b>	<b>Importance</b>
113	Hospital	Health & wellness, clinics, specialties
114	Horse Farms	Beauty & tourism
115	Country Roads	Great bicycling, wonderful scenery
116	Cardome	Heritage, family history
117	Ward Hall	
118	Royal Spring Park	History & Tourism, Public green space
119	Library	Promotes literacy & learning, education history, community gathering
120	Hospital	Health & wellness, clinics, specialties
121	Downtown/Main street	Lively, lighting, small business, concerts, economic engine, no empty store fronts
122	Georgetown College	
123	Library	Promotes literacy & learning, education history, community gathering
124	Scott Co. Park	Recreation, fishing, great green space
125	Garth Elementary	Downtown School

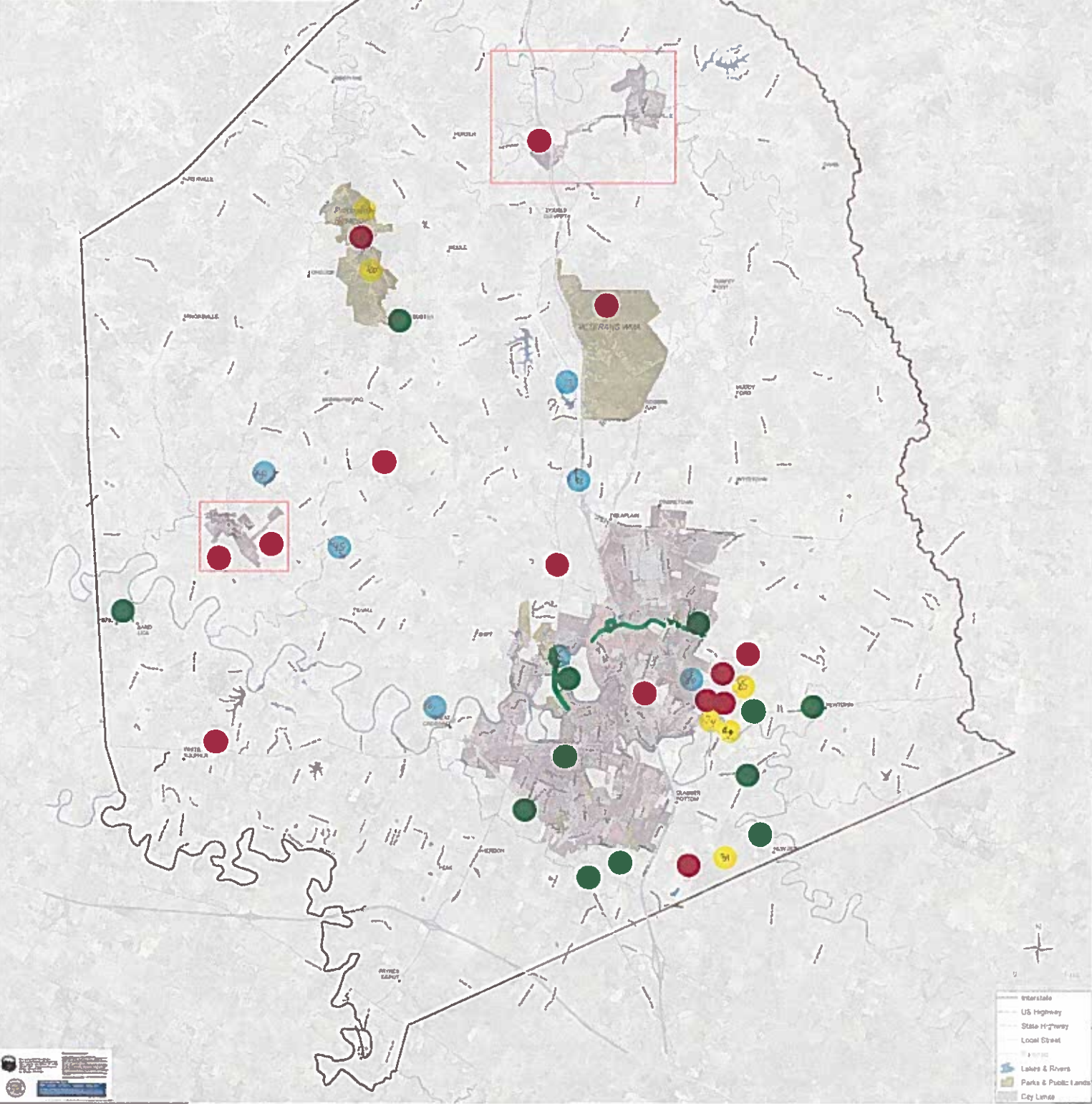
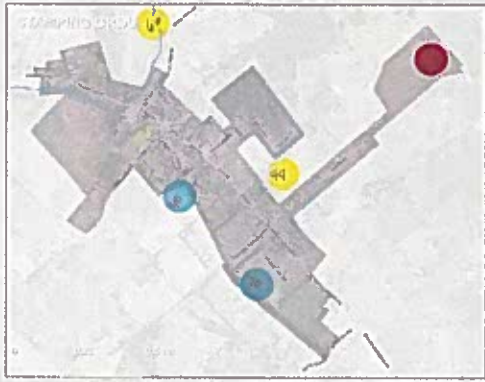


# GEORGETOWN KENTUCKY





# SCOTT COUNTY KENTUCKY



## **Comp Plan Kick-Off Meeting 1-26-2016**

### **Long-Term Vision Activity "Imagine Scott County in 2040. What does it look like?"**

Visioning ideas were categorized and written on paper on the walls for everyone to see. The goal was to encourage attendees to share their long-term vision for Scott County, including:

1. Wants, needs, etc.
2. What's missing in our community that you'd like to have?
3. Categorize comments as physical/environmental, social, or economic

The comments below were submitted under the categories of Physical, Social, and Economic. They were then assigned to subcommittees based on their best fit. Some comments are listed under multiple subcommittees due to their complex nature.

#### **Infrastructure and Community Facilities (Physical)**

- Multi-use & recreational trails
- Better transportation system
- Sidewalks & bike paths connecting neighborhoods
- Lit alleyways downtown
- Fix downtown sidewalks not just main street
- Sidewalks connecting neighborhoods
- Green infrastructure (storm water quality awareness)
- Safe bike lanes & pedestrian friendly shopping areas
- Bike/walk trails to connect subdivisions to shopping and schools
- Wider tunnel under railroad tracks on 460
- Access to public transit (local & regional)
- Anticipate self-driving cars & benefits to infrastructure (eg parking)
- Working street lights
- Underground utilities in the whole county

#### **Infrastructure and Community Facilities (Social)**

- Pool/athletic center in North &/or East
- Theatre
- Solid and reliable infrastructure
- Develop Lisle road facilities more (see E'town)
- Controlled growth-we don't have to double by 2040
- Arts community using "downtown" space in Stamping Ground
- Recreational Lake in north for camping & tourism
- Formal park system for health of citizens connected

### **Infrastructure and Community Facilities (economic)**

- A willingness to raise taxes enough to adequately fund a strong infrastructure/ schools/sidewalks, recycling, & the arts
- Curb recycling for city residents
- Safe sidewalks & Lighting for foot traffic safety
- Build community center in Stamping Ground to provide needed services to citizens

### **Land Use (Physical)**

- Better transportation system
- Strong zoning & planning (no rubber stamp)
- Safe bike lanes & pedestrian friendly shopping areas
- Keep development near city & leave lots of open country
- Phase out motor transport in favor of pedestrianism, as demanded by Comp Plan 2011-2016 pp 3,4,5.
- As we grow continue to have larger size lots
- Anticipate self-driving cars & benefits to infrastructure (eg parking)
- Organized developments with aesthetic controls

### **Land Use (Social)**

- Formal park system for health of citizens connected
- Continuing heritage of small churches throughout county

### **Land Use (Economic)**

- Diversify beyond manufacturing
- Become more of a "destination" for restaurants, shopping, entertainment, emphasize distillery heritage, horses, other KY elements
- Discount, affordable low-income housing

### **Agriculture and Environment (Physical)**

- Stone fences maintained & enhanced
- Keep development near city & leave lots of open country
- Well-farmed landscape
- No more cluster subdivisions with beige houses

### **Agriculture and Environment (Social)**

- Recreational Lake in north for camping & tourism
- Continuing heritage of small churches throughout county

### **Agriculture and Environment (Economic)**

- More Community Supported Agriculture in the county
- Bigger, more festive farmers market
- Curb recycling for city residents
- Homestead economies
- Limit commerce to homesteaders' surpluses, localize commerce (see Comp. Plan 1991 Vol.2 P.8 Sec 5.3.2, Agriculture)
- Every citizen a farmer

### **Growth & Economic Development (Physical)**

- Multi-use & recreational trails
- Better transportation system
- Safe bike lanes & pedestrian friendly shopping areas
- Access to public transit (local & regional)
- Historic downtown- vibrant & restored

### **Growth & Economic Development (Social)**

- Controlled growth-we don't have to double by 2040
- Restaurant, café, a la Midway in S.G.
- Recreational Lake in north for camping & tourism
- Concert hall (attract big name artists)
- Support for the arts and cultural events
- Farmers markets

### **Growth & Economic Development (Economic)**

- Diversify beyond manufacturing
- Bring in major dept stores
- More variety/ small business downtown
- Bigger, more festive farmers market,
- More CSA in the county
- Friendly environment for small businesses
- Become more of a "destination" for restaurants, shopping, entertainment, emphasize distillery heritage, horses, other KY elements
- A willingness to raise taxes enough to adequately fund a strong infrastructure/ schools/sidewalks, recycling, & the arts
- Better restaurants not fast food
- Higher end department stores keep our tax dollars in Scott County
- Destination/Stop over for travelers between Canada & Florida, West to mountains

- As a growing community and to better serve the citizens of Scott County->Leader in Healthcare
- Destination for high tech businesses, just outside Lexington
- Toyota Dealership

### **Human Services & Community Building (Physical)**

- Access to public transit (local & regional)

### **Human Services & Community Building (Social)**

- Theatre
- Anyone who can't drive should have access to enrichment activities
- Instill virtue and values in our people and promote Godly people
- Raise awareness of poverty with solutions
- Strategic planning recognizes it exists and works to fix it New resident transitional program to inform about all aspects of community (school, work, social, clubs, etc.)
- An increase of free/ low cost activities for children & teenagers
- With every initiative, consider how to make its benefits accessible to lower-income members of the community
- Pass a Fairness Ordinance for Georgetown and or all of Scott County
- Ban indoor smoking
- More activities for kids/family
- Positive activities for teens: bowling, put-put, skating, karate etc.
- Concert hall (attract big name artists)
- Legal aid
- Tenant services
- Support for the arts and cultural events

### **Human Services & Community Building (economic)**

- Discount, affordable low-income housing
- As a growing community and to better serve the citizens of Scott County->Leader in Healthcare

### **Heritage & Urban Form (Physical)**

- Lit alleyways downtown
- Fix downtown sidewalks not just main street
- Sidewalks connecting neighborhoods
- Safe bike lanes & pedestrian friendly shopping areas
- Landscaping of main roads and entrances to Georgetown

- Phase out motor transport in favor of pedestrianism, as demanded by Comp Plan 2011-2016 pp 3,4,5.
- Historic downtown- vibrant & restored
- Organized developments with aesthetic controls
- Underground utilities in the whole county

#### **Heritage & Urban Form (Social)**

- Arts community using "downtown" space in Stamping Ground
- Restaurant, café, a la Midway in S.G.
- Continuing heritage of small churches throughout county

#### **Heritage & Urban Form (Economic)**

- Become more of a "destination" for restaurants, shopping, entertainment, emphasize distillery heritage, horses, other KY elements
- Develop artistic community in downtown Stamping Ground

**Comp Plan Kick-off Meeting**  
**Growth Management Activity**

**1-26-2016**

“We’ve had a rapid annual growth rate and are expected to reach a county-wide population of 100,000 people by 2040 (twice our current pop). What do we need to be doing to prepare for that kind of growth?” Participants were asked to write responses on post-it notes to place on the wall. After the meeting, the comments were assigned to subcommittees based on their best fit. Some comments are listed under multiple subcommittees due to their complex nature.

**Infrastructure & Community Facilities**

- Internet- bigger networks
- More library locations
- Improved area traffic by cherry blossom/ connector road
- Broadway 4 lanes instead of 2
- Make the 2 lane through town back to 4 lanes
- Large public pool
- Dog parks
- Increase library spaces
- Expand emergency services especially in rural areas
- Improve roads into Stamping Ground to promote economic and residential growth
- Reliable cell service county wide
- Sidewalks throughout the community
- Drainage, storm-water, water quality focused growth GREEN
- Public financing of transit
- Public transportation
- No more fast food restaurants
- Have a plan and vision that is competitive with surrounding communities and that focuses on quality and sustainability
- Require traffic studies with all major plats and the developer to be responsible.



### **Agriculture & Environment**

- Expand emergency services especially in rural areas
- Re-establish riparian zones back to native plantings
- Infrastructure planned & implemented with a green focus

### **Growth & Economic Development**

- Great schools
- Keep small businesses downtown
- Improve roads into Stamping Ground to promote economic and residential growth
- Public financing of transit
- Have a plan and vision that is competitive with surrounding communities and that focuses on quality and sustainability
- Good Foods or Whole foods needed

### **Human Services & Community Building**

- More library locations
- Great schools
- Support & strengthen health & human services infrastructure
- Provide broader services for homeless in Georgetown
- Expand public health education services and physical education resources
- Make sure when we become a big city that we do not have the bad habits we see in those cities by making good values central to growth
- Good quality affordable housing
- Expanded educational opportunities
- Public transportation

### **Heritage & Community Building**

- Sidewalks throughout the community

## **Land Use**

- Improved area traffic by Cherry Blossom/ Connector Road
- Have a strong plan and designated areas with controlled structural & aesthetic properties to define the city a "master plan"
- Public transportation
- No more fast food restaurants
- Have a plan and vision that is competitive with surrounding communities and that focuses on quality and sustainability



# Scenario Planning

Scott County Extension Office

March 21, 2016 5-7 PM

---

This joint sub-committee level exercise will enhance the Comprehensive Planning process by expanding the scope of trends examined by the sub-committees beyond a projection based on the last 30 years to include additional plausible scenarios. It will also provide a valuable collaboration for the different sub-committees to see areas where they overlap with other sub-committees, and identify areas of commonality.

## Introduction 5:00–5:15 PM

- What is scenario planning?
  - *Scenario planning is a tool used to make flexible long-term plans. We will look at several futures for Scott County. Scenarios do not predict the future, but they do illuminate the drivers of change.*
- Purpose
  - *We want to acknowledge the unknown and unpredictability of the future. Many long range plans focus too much on a future based on past events. We want to identify key players and opportunities for collaboration across our diverse community.*
- Scenario Analysis
  - *Each sub-committee group will: examine how the scenario impacts the current environment, identify key actors and drivers for change, determine what, if any regulations need to change, and project how the group would plan to overcome obstacles to achieve the Vision by 2040.*

## Scenario 1: 5:15-5:45 PM

- Introduce the scenario: *By 2040, based on recent growth trends, the population will double. Sadieville, Stamping Ground, and Georgetown have determined they will freeze the Urban Service Boundaries and City Limits, effective immediately in 2016.*
- Sub-Committee Analysis
- Sub-Committee Reports

## Scenario 2: 5:45-6:15 PM

- Introduce the scenario: *In 2015, 6.7% of the population was 70 years of age or older and median household income was roughly \$62,000. In 2040 20% of the population is 70 years of age or older, median household income has dropped by 15% to \$52,700, and 10% of the workforce is unemployed.*
- Sub-Committee Analysis
- Sub-Committee Reports

## Scenario 3: 6:15-6:45 PM

- Introduce the scenario: *In August 2016, an EF5 tornado with a 2-mile diameter hits Georgetown, and roughly follows the I-75 corridor to Sadieville.*
- Sub-Committee Analysis
- Sub-Committee Reports

## Wrap Up 6:45-7:00 PM